



On Behalf of
Dave and Abby Robertson,
Cordyline Sheep Genetics

Helmsman Auction of
40 Terminal Sire

Cordyline Rocket Rams

Monday December 2, 2024

Sale runs from 5-6pm

Inspection from 4pm

Brookfield Park

62 Weston Road, Waiareka Junction, Oamaru 9401

BBQ and refreshments provided



So what is a Rocket Ram?



Rocket rams are a composite terminal sire designed to have lambing ease and top-end growth rates. The aim is for efficient meat producing rams, being guided by strong data and sound stockmanship.

The Rocket Ram composite base uses Poll Dorset -Texel and Charollais/Texel-Southdown ewes inseminated with imported White Suffolk sires and some naturally mated to home bred rams.

Why White Suffolks. They are a progressive breed in Australia that have harnessed the selection indexes and group breeding schemes to be trait leaders for meat traits in many areas. They have kept a focus on post weaning growth, meat yield, eating quality and lambing ease. This has generated a versatile terminal sire that is one of the most widely used in Australia and are consistently the highest ranked for profit driving traits. There is appeal in using higher growth rate genetics that grow out to bigger prime weights. Many lamb finishers have the agronomy and systems to now harness the potential of these higher metabolic rate genetics.

As fecundity and ewe performance lifts, there is more opportunity to breed a larger proportion of 'B' mob ewes to lamb growth specialist sires. Being white and finer edge wool sheep, the merinox hogget wool has real value also. I would like to explore the potential of the White Suffolk x as a maternal ewe lamb producing ewe. They are popular over the ditch.

Lambing ease and vigour. The lambing ease and survival of stud ewes and commercial merino flock have given me confidence that the rocket ram is a safe and versatile terminal sire. Lambing is fairly hands-off, apart from tagging and birth weight measuring.

Health traits. The ram hoggets have had minimal drenching. All rams were dag scored in September. Performance in the face of less drenching is being requested by the sheep industry.

By keeping an eye on health traits it will ensure we don't get too carried away by the lure of big growth stats without functionality and constitution.

This year I have culled the rams down to get a good standard for sale. The length, size, muscle expression and shoulder shape shown in this year's rams gives me confidence they will deliver good results. The Texel-Southdown types are more compact with higher fat levels. These seem well suited for harder places targeting early weaning/store markets.

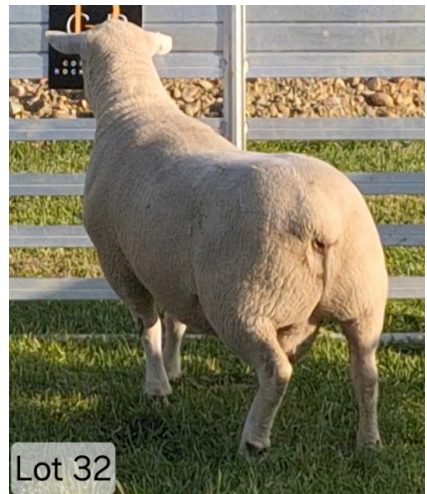
I look forward to catching up with you. Your commercial feedback, support and interest are greatly appreciated.

Regards
Dave Robertson





2024 Sale Rams





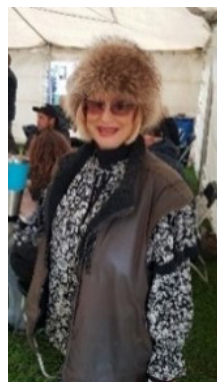
The Venue

Brookfield Park, 62 Weston Rd.



Brookfield Park is a Heritage New Zealand Category 2 listed property.

Jennifer (JJ) Rendell bought the property in 2003 with the intention of returning “Brooky” to its former glory as a family home and estate. Jennifer’s dream has always been to create an imaginative garden retreat surrounding a restored Victorian country homestead. The restorative process was challenging as the property and garden had been neglected and had fallen into serious disrepair. But after a lot of hard graft and plenty of imagination, JJ achieved her vision and has been delighting visitors ever since. You will enjoy its classic and quirky features. Abby and I have enjoyed getting to know Jennifer (and her animals) over the years and she suggested we should have the ram sale on the lawn one day. So here we are again for the 4th time!



Helmsman Auction System

A helmsman auction is a silent auction where all rams are open for bidding at the same time. The auction runs for a set time, from 5-6pm. It allows more time to decide what rams are purchased and for what price.



Registration and bidding terms

Buyers must register prior to the sale and receive a buyer number. All rams are displayed for inspection with information in the catalogue. Bids can be taken from 4pm. You may bid on any ram regardless of lot number by filling in a bidding slip, entering the ram lot number, your buyer number and your bid. For example:

Ram Lot No.	Buyer No.	Bid (\$)
4	29	1000

Give your bidding slip (or verbal instruction) to the agent at the registration desk. Bids will be displayed against the ram lots on the white board, where you can follow the success of your bid.

Starting bid is \$800 unless otherwise stated. **Multiples of \$100** or higher will be accepted up to \$1000 and \$50 minimum after \$1000. Once a bid is submitted it cannot be retracted and the bidder is responsible for it until over-bid. The sale period ends at 5.30pm, unless further bids are lodged within 5 minutes of this time, which will trigger an extension of time at the discretion of the registrar.

Conditions of Sale

This Sale will be conducted under the terms and conditions of the New Zealand Stock and Station Agents Association.

Each lot becomes the property of the purchaser at the conclusion of the sale and must leave instructions at the registration tent as to delivery and payment of their purchases. Payment can be arranged by invoice or cheques issued on the day. All rams are sold Exclusive of GST.

Insurance & Guarantee

We recommend purchasers ensure their stock purchased on the day of the sale. Any issues with death or ill-thrift of rams within 12 months of purchasing will be compensated by arrangement.

Stock Firms

Stock and station agents are invited to participate and will receive 9% commission for buyers who purchase and registered before 4pm on the day of the sale.

Although every care has been taken in ensuring the accuracy of this catalogue no responsibility is accepted for any errors that may be included therein.

BRUCELLA OVIS ACCREDITED.

Explanation of the performance records



NZGE/NZTW = Overall Terminal Index. TS index have units of cents per lamb born. Includes growth, muscle and survival stats. Growth being the biggest part.

100dWT BV = weaning weight genomic breeding value. It is a value of kgs above the average in 1995. So +4 BV = 4 kg heavier

200dwt BV = autumn weight breeding value. It is a value of kgs above the average in 1995. It is more heritable than weaning weight.

Meat BV = summarizes the lean yield merit of an animal across three regional eBVs: SHLY, LNLy, and HQLY. Units are kilograms of tissue relative to the average for animals of the standard carcass weight of 19 kg.

FAT BV = base average is 3kg of fat on a 19kg carcass. Measured in kg more less fat than that average. Derived from ultrasound of fat depth and EMA measures. A +0.2 fat BV means that animal will have 3.2kg of fat/19kg carcass. A -0.7 fat BV will have 2.3kg of fat/19kg carcass, and probably more muscle and better lean yield.

TSDag index = Dag score from the 12 months. The higher index value means they are less likely to have dags. The rams are scored 0,1,2,3,4.

The 200 day weight data of many of the 2023 drop of rams is in the top 10% of the 25,000 rams in the index data set. As we get more information on the White Suffolks the linkages and accuracy as well as breed type will improve. I prefer to view breeding values in their individual components rather than indexes. It is interesting to check these BVs against actual weights to see what is really happening. To drive genetics of growth higher, there will be a tendency to get bigger frame size and higher adult live weight. This does need to be tempered with the lambing ability driven by shape and birth weight.

Birth weight and lambing ease is an essential. These rams are to go over fine wool ewes and hoggets. There will be trade-offs with not having that heavy brisket or strong bone look. My recording of this trait was a bit variable in 2023...the first and last few pages of tagging missed out on birth weights.

The heritability of **weaning weight** is ~ 15%, as this trait is influenced by the mother's milk and the season. The heritability of the autumn weight (200dLwt) is much stronger at ~30-40%.

EMA (eye/chop muscle area) is the ultrasound measurement of the loin. It can explain about 50% of the overall carcass muscularity. That is, a higher EMA ram (adjusted for its body weight) will generally carry more muscle and better lean carcass yield. The heritability of this trait is reasonable at ~30%. It is still useful to handle and assess the fore-arm, neck, shoulder and hind quarter to gauge overall muscularity and proportions.

Dag and FEC traits are not commonly recorded with terminal sires, but it is part of a modern, balanced breeding programme to include them. It was too dry in Autumn 2024 to record FECs.

Rocket Ram Sale data 2024					Index total	Index	(kg)	BV	(kg) 12/12	BV	(kg) 25/3	BV	BV	(cm2)	Index	Breed composition
LOT	Tag	Sire ID	Dam ID	B/R	NZTW	Survival	B. Wt	100dwt	100dwt	200dwt	200dWt	Fat	Meat	EMA	TSDag	Abbreviations: W.Suffolk (White Suffolk) - R.Dorset (Romney Dorset) - P.Dorset (Poll Dorset) - L.Supreme (Lamb Supreme)
1	262/23	Ash 293/17	PB2546/20	2 2	2014	134	5.4	4.8	40	11	76	-0.48	0.61	22	1	56% W.Suffolk; 17% Texel; 10% R.Dorset; 9% P.Dorset; 8% L.Supreme
2	264/23	Ash 293/17	PB2111/21	1 1	2152	143	6	5.4	47	11.9	85	-0.44	0.38	26.8	13	50% W.Suffolk; 21% Texel; 16% P.Dorset; 8% R.Dorset; 6% L.Supreme
3	265/23	Ash 293/17	PB2303/20	2 2	2149	112	4.8	5.2	44	10.5	75.5	-0.58	0.41	28.6	4	55% W.Suffolk; 19% Texel; 13% P.Dorset; 7% Charollais
4	266/23	Ash 293/17	PB2303/20	2 2	2030	112	4.7	5	42	10.2	71.5	-0.45	0.33	24.9	9	55% W.Suffolk; 19% Texel; 13% P.Dorset; 7% Charollais
5	272/23	Ash 293/17	PB2104/21	2 2	2311	131		5.8	41	12.7	77.5	-0.42	0.44	23.1	15	56% W.Suffolk; 19% Texel; 9% P.Dorset; 8% R.Dorset; 7% L.Supreme
6	276/23	Ash 293/17	PB2572/18	2 2	1977	127	5	5	40	11.6	81.5	-0.62	0.35	29	3	53% W.Suffolk; 15% Texel; 14% Charollais; 14% P.Dorset
7	277/23	Ash 293/17	PB2572/18	2 2	1719	85	5	4.4		9.2		-0.47	0.30		12	53% W.Suffolk; 15% Texel; 14% Charollais; 14% P.Dorset
8	278/23	Ash 293/17	PB2414/19	2 2	1843	138	4.5	4.1	38	7.9	64	-0.66	0.45	26.1	15	50% W.Suffolk; 21% Texel; 15% P.Dorset; 8% R.Dorset; 6% L.Supreme
9	200/23	Ash 293/17	PB2414/19	2 2	1808	138	4.5	4.3	42	7.7	65.5	-0.45	0.39	19.5	12	50% W.Suffolk; 21% Texel; 15% P.Dorset; 8% R.Dorset; 6% L.Supreme
10	284/23	Ash 293/17	PB2529/18	1 1	2059	110	7	5.1	46	12.3	88	-0.52	0.37	26.7	16	50% W.Suffolk; 23% Texel; 13% P.Dorset; 8% R.Dorset; 6% L.Supreme
11	204/23	22/22	PB2864/16	2 2	1571	139		4.2	38	6.7	61.5	-0.39	0.29	19.9	8	27% W.Suffolk; 33% Texel; 24% P.Dorset; 10% R.Dorset; 6% Charollais
12	205/23	22/22	PB2864/16	2 2	1879	139		5.1	45	8.9	76	-0.26	0.38	23.4	8	27% W.Suffolk; 33% Texel; 24% P.Dorset; 10% R.Dorset; 6% Charollais
13	210/23	22/22	214/21	2 2	1095	89		3	32	5.7	59	0.04	0.19	16.9	5	27% W.Suffolk; 40% Southdown; 21% Texel; 6% Charollais; 6% P.Dorset
14	211/23	22/22	214/21	2 2	1373	89		3.5	36	7	67.5	-0.25	0.26	25.8	5	27% W.Suffolk; 40% Southdown; 21% Texel; 6% Charollais; 6% P.Dorset
15	219/23	22/22	PB2272/17	2 2	1546	57		4.2	36	7.2	64	-0.66	0.16	24.6	1	27% W.Suffolk; 43% P.Dorset; 22% Texel; 6% Charollais
16	234/23	22/22	30/20	3 3	1259	90		2.6	31	5	55	-0.64	0.30	23.4	-7	27% W.Suffolk; 36% Texel; 25% Southdown; 6% Charollais; 6% P.Dorset
17	237/23	22/22	PB2212/20	2 2	1663	147	4	3.8	37	5.1	52.5	-0.57	0.52	17.1	0	33% W.Suffolk; 25% Texel; 19% P.Dorset; 14% R.Dorset; 9% L.Supreme
18	247/23	22/22	229/21	2 2	1978	53		5.3	40	9	70	-0.44	0.30	26.8	-16	27% W.Suffolk; 35% Charollais; 21% Texel; 11% Southdown; 6% P.Dorset
19	256/23	22/22	848/18	1 1	1136	89	5.5	3.3	45	7	74	0.14	-0.01	23.1	9	27% W.Suffolk; 52% Southdown; 9% Texel; 6% Charollais; 6% P.Dorset
20	267/23	22/22	877/18	2 1	1127	131	5.5	3.2	38	7.1	68.5	0.12	0.02	21.6	4	27% W.Suffolk; 52% Southdown; 9% Texel; 6% Charollais; 6% P.Dorset
21	269/23	22/22	217/21	1 1	1065	86	5.3	2.8	44	5.2	69	-0.02	0.12	21.6	4	27% W.Suffolk; 40% Southdown; 21% Texel; 6% Charollais; 6% P.Dorset
22	281/23	22/22	108/21	3 3	1548	87	4.5	4.3	39	8.9	70	-0.11	0.06	22.2	8	54% W.Suffolk; 25% Southdown; 9% Texel; 6% Charollais; 6% P.Dorset
23	286/23	22/22	PB2675/18	1 1	1358	126	5.5	3.3		5.6	54.5	-0.32	0.44	15.9	8	27% W.Suffolk; 39% Texel; 18% P.Dorset; 10% R.Dorset; 6% Charollais
24	287/23	22/22	PB2450/20	3 2	2020	181	4.2	4.7	33	8.5	65	-0.90	0.56	26	4	27% W.Suffolk; 34% Texel; 17% P.Dorset; 12% Charollais; 11% R.Dorset
25	290/23	22/22	PB2093/21	2 2	1890	117	5	5		8.7	60	-0.55	0.41	19.6	3	27% W.Suffolk; 48% Texel; 14% P.Dorset; 6% Charollais
26	292/23	22/22	109/21	2 2	1528	75	6	4.2	37	8.5	65.5	-0.15	0.12	22.1	13	54% W.Suffolk; 25% Southdown; 9% Texel; 6% Charollais; 6% P.Dorset
27	298/23	22/22	PB2098/21	2 2	2236	155	6.5	5.3	41	7.9	60.5	-0.79	0.60	24.5	1	33% W.Suffolk; 26% Texel; 18% P.Dorset; 14% R.Dorset; 9% L.Supreme
28	202/23	120/21	PB2220/19	2 2	2045	107		5.1	41	10.4	74	-0.64	0.64	24.5	-8	23% Southdown; 27% Charollais; 40% Texel; 6% P.Dorset
29	206/23	120/21	PB2214/18	2 2	1778	108		4.6	42	8.3	70	-0.45	0.50	24.8	2	23% Southdown; 49% Texel; 20% P.Dorset
30	207/23	120/21	PB2214/18	2 2	1756	108		4.7	45	8	70.5	-0.26	0.46	22.4	7	23% Southdown; 49% Texel; 20% P.Dorset
31	209/23	120/21	81/20	3 3	2067	96		4.9	43	10.1	75	-0.51	0.50	26.4	4	49% Southdown; 51% Texel
32	212/23	120/21	193/21	1 1	1610	96		4.5	48	7.7	74	-0.29	0.20	25.6	6	48% Southdown; 27% Charollais; 25% Texel
33	216/23	120/21	PB2432/20	3 2	2093	120		5	41	10	74	-0.84	0.69	26	-5	23% Southdown; 50% Texel; 10% P.Dorset; 9% R.Dorset; 8% L.Supreme
34	223/23	120/21	PB2105/21	3 2	1582	140		3.7	31	7.2	58.5	-0.69	0.48	20.8	5	23% Southdown; 44% Texel; 18% Charollais; 11% P.Dorset
35	225/23	120/21	PB2105/21	3 2	1756	140		4		8.2	63.5	-0.88	0.58	25.7	-9	23% Southdown; 44% Texel; 18% Charollais; 11% P.Dorset
36	226/23	120/21	PB2219/20	2 2	1691	125	3.5	4.1	31	7.9	59.5	-0.51	0.59	18.6	8	23% Southdown; 51% Texel; 12% P.Dorset; 8% Charollais
37	228/23	120/21	PB2304/20	1 1	1928	193	4	4.4	45	7.7	70.5	-0.82	0.61	27.4	-14	23% Southdown; 50% Texel; 11% P.Dorset; 8% R.Dorset; 7% Charollais
38	242/23	120/21	58/20	3 2	1639	105	3.5	3.6	42	6.6	66	-0.64	0.48	26.4	-4	49% Southdown; 51% Texel
39	257/23	120/21	107/21	2 1	1206	93		2.9	38	6.6	62.5	-0.20	0.26	22.4	2	49% Southdown; 25% W.Suffolk; 25% Texel
40	309/23	120/21	893/18	1 1	1548	92		4.3	48	8.3	79	-0.23	0.24	24.8		75% Southdown; 25% Texel

Colour reference table:

Actual data

Top 20% in flock

SIL Top 20% SIL

SIL Top 5%



Reference Sires



ID	Sire	Dam	Index	Comment
Cordylone 120.21	Dalziel 37/18 Texel	988.19 Southdown (94%) Charollais (6%)	Index: 1645 100dwBV: 4.3 200dwBV 9.0 Meat BV 0.42 Fat Bv -0.36	Large bodied ram with length and hind ¼ power. A freak of a ram. His sire had top 1% for meat in CPT data.
Cordylone 22.22	Ashmore 293/17 (white Suffolk)	Punch Bowl 2225/19 Poll D (24%) Tex (35%) Charollais (25%) Hi SIL index ewe. (2170 index) Top 5% for Wwt and top 7% Aut wt BVs	Index: 1565 100dwBV: 4.4 200dwBV 8.0 Meat BV 0.17 Fat Bv -0.19	Used as a ram lamb From 1st crop White Suffolk AI. Always a standout. Lambing ease sire, with finer brisket and large loin and hind ¼.
Ashmore 293.17 AI white Suffolk sire	Imported by Will Gibson. Real impact sire that has been used extensively in Aus. Has been a great first up sire to start the breed in NZ.		Lamb plan data (AUS data base) Top 5% for terminal and maternal sire meat production top 5% for 200 day weight. (Pwt BV 20.74) Top 5% for eating quality (Shear force and IMF) Top 5% for lambing ease direct Top 10% for carcass yield/dressing out %	





Notes



Acknowledgements

Jennifer Rendell and Peter Newberry (property manager) providing a great venue. My sister Carolyn, my father David, Greg & Katie Waite, Louise Harding, Anna & Julian Waite for their help. Sean Daly for help with the BBQ and Bar. Will Bole for helping out more than he needed to. Ali Bulle and Angus Pilmore for the keenness and professionalism for running the helmsman. Robin Crawford and Brackens Print for the catalogue.

My family Abby, Hamish and Elliot for their continued support and interest.



Contact details

David and Abby Robertson
138 Devils Bridge Rd
Oamaru
dave@vet111.co.nz
027 503 7956



Purchase Notes

BUYER No.

CORDYLINE SHEEP GENETICS