



2024 BULL & HEIFER YEARLING SALE

THURSDAY,
10TH OCTOBER 2024 AT 1PM



Sudeley Angus Genetics



LOT & TAG ORDER

LOT #	TAG #
1	12 Heifers
2	12 Heifers
3	U145
4	U277
5	U57
6	U152
7	U174
8	U19
9	U85
10	U105
11	U70
12	U53
13	U135
14	U241
15	U186
16	U179
17	U271
18	U257
19	U177
20	U237
21	U187
22	U117
23	U207
24	U233
25	U206
26	U209
27	U184
28	U220
29	U232
30	U222
31	U248

TAG #	LOT #
12 Heifers	1
12 Heifers	2
U19	8
U53	12
U57	5
U70	11
U85	9
U105	10
U117	22
U135	13
U145	3
U152	6
U174	7
U177	19
U179	16
U184	27
U186	15
U187	21
U206	25
U207	23
U209	26
U220	28
U222	30
U232	29
U233	24
U237	20
U241	14
U248	31
U257	18
U271	17
U277	4



On account of Andrew & Anna Laing
Mobile: 027 253 5625

Thursday 10th October 2024 at 1pm

Bulls available for viewing from 12pm on sale day
or by prior arrangement

To be held at "Meadowbank"
546 Selwyn Lake Road, Irwell, Leeston

SELLING AGENTS: PGGW & RLL

Auctioneer & Genetics Specialist:
John McKone 027 2299 375

PGGW Livestock Representative:
Stewart Uren 027 5910 446

RLL Stud Stock:
Anthony Cox 027 2083 071

RLL Livestock Representative:
Bob Davidson 027 4730 808
Will Hurst 027 4730 858

PARTICIPATING COMPANIES:

Carrfields • Hazlett • bidr®

6% commission paid to purchasing companies on bulls only.



/ Sudeley Angus Genetics



PGG Wrightson Livestock

DEFER-A-BULL

Farm smarter.

**BUY BULLS NOW,
PAY LATER!**

**Contact your local livestock rep to get the best genetics
for your business.**

SIMON EDDINGTON

Upper South Island - Genetics Rep
027 590 8612

NIC DENTON

Canterbury - Livestock Rep
027 434 4094

ALEX HORN

Canterbury - Livestock Rep
027 591 8449

STU UREN

Canterbury - Livestock Rep
027 591 0446

DAVID KELK

Canterbury - Livestock Rep
027 434 4086

GRANT NORDSTROM

Canterbury - Regional Livestock Manager
027 590 8612

JOHN MCKONE

Canterbury - Genetics Rep & Auctioneer
027 591 8449

GLENN PEDDIE

Canterbury - Livestock Rep
027 200 2232


JESSE HOUSTON


Canterbury - Livestock Rep
027 434 4086

TOM DOBSON

Canterbury - Livestock Rep
027 337 7047

www.pggwrightson.co.nz/defer-a-bull

 fb.com/pgwlivestock

 instagram.com/pgwlivestock

scan to see
the sale dates



INTRODUCTION

Andrew, Anna, Harriet & Georgie would like to extend a warm welcome to everyone attending our Inaugural Yearling bull & heifer sale.

Sudeley Genetics is a combination of Angus cattle and Maternal & Terminal sheep genetics with the same breeding philosophy, breeding a base of strong, even conformationally correct, productive dams that are the foundation of any profitable sheep and beef operation.

All breeding stock including a large commercial sheep operation are run at Springvale, a 1400ha hill property on the Banks Peninsula where we are based, and all youngstock are run on the finishing unit at Irwell expertly managed by John & Sharon Templeton.

In my opinion it all starts and stops with the cows, the engine room as I like to call it! and tells the story for any breeding programme.

As many of you have seen the cows for yourselves, our females are a herd of strong, good boned, deep bodied cows with great feet and heavy coats coupled with a respectful temperament and worked with horses and dogs throughout their lifetime at Springvale.

Our yearling catalogue is taken very seriously and has been designed especially for Heifer and or Cow mating.

As a Stud breeder I believe it is our duty to use all available science and information possible, which includes an accurate pedigree and EBV'S derived via DNA to enable heifers to calve easily in her first calving which prolongs her lifetime and profitability in your herd.

Again, this year we have added a selection of heifers to the catalogue. These heifers are from our retained heifer line and are only offered to commercial farmers to prevent stud breeders and prac recording programs from using some of our best genetics, a great opportunity for the commercial farmers to tap into some top pedigrees & performance.

All yearling bulls & heifers have been vaccinated with Bovilis BVD, 10 in 1, long acting selenium injection and a copper bullet. An annual booster of Bovilis BVD should be given in August annually.

We have an open door policy and thoroughly enjoy visitors to Springvale and Irwell to show and discuss our breeding program.

Please feel welcome to contact us if you have any questions you would like answered and we invite you to be with us on Thursday 10th October, 1pm and enjoy our hospitality.

Kind regards

Andrew, Anna, Harriet & Georgie

CONDITION OF SALE

1. The sale will be conducted under the usual terms and conditions of the N.Z. Stock and Station Agents Assn.
2. Each lot becomes the property of the purchaser at the conclusion of the sale.
3. Although every care has been taken in ensuring the accuracy of this catalogue no responsibility is accepted for any errors that may be included therein.
4. All bulls and heifers are tuberculosis tested in accordance with statutory regulations. TB Status C10
5. G.S.T.: All bulls and heifers sold are G.S.T. exclusive.
6. All bulls and heifers in this catalogue have been NAIT tagged.
7. **PURCHASING REBATE** All intending purchasers are required to register at the sales office prior to the sale. A purchasing rebate of 6% will then be paid on bulls only to non-participating livestock companies and recognized independent livestock agents with approved credit facilities introducing and/or accompanying buyers to the sale. Arrangements must be made prior to the sale and settlement made on the purchaser's behalf within 14 days.
8. All heifers are only to be purchased for commercial use and not to be transferred or prac recorded

OSH

Every effort will be taken by the Vendors, PGGW, Rural Livestock Ltd, their staff and assistants, both on the sale day as well as any visits of inspection to ensure the safety of intending buyers and visitors. We wish however to advise that while this sale is run under normal management conditions, certain dangers exist in relation to livestock and their environment. Visitors should take care to ensure their personal safety.

DISCLAIMER

The TransTasman Estimated Breeding Values (EBVs) contained within this sale catalogue were compiled by the Agricultural Business Research Institute (ABRI) from the data supplied by breeders. Neither the AngusNZ Association nor ABRI oversee or audit the collection of this data.

This sale will be hosted by bidr® (bidr.co.nz) as a HYBRID ON-FARM auction, with online bidding and a live-stream available for online purchasers.

All intending online purchasers must register with bidr® using an account held with one of the bidr® partner agencies in advance of the sale date.

The bidr® team is available to assist intending purchasers with signing up and registering - please call 0800 TO BIDR (0800 86 2437), or email enquiries@bidr.co.nz for assistance at any point.

Alternatively, contact your local bidr® representative:

Liam Beattie

General Manager
021 918 554

Bruno Santos

Upper North Island Territory Manager
027 221 8276

Olivia Manley

Lower North Island Territory Manager
027 348 6354

Mckenzie Alfeld

Upper South Island Territory Manager
027 341 8066

Sam Murphy

Lower South Island Territory Manager
027 243 2736

Bianca Perkins

Business Development Coordinator
027 732 0006



Rural Livestock

Looking for stock?

Let our network
of over 45 agents
help you source the
stock you need.

Talk to your local Rural Livestock agent today.

Genetics Specialist:

Anthony Cox - 0272 083 071

Livestock Agents:

Bob Davidson - 0274 730 806

Donald Cooke - 0274 730 854

Will Hurst - 0274 730 858

Aaron Leckie - 0274 730 808

Hayden McCarthy - 0274 730 802

www.rurallivestock.co.nz

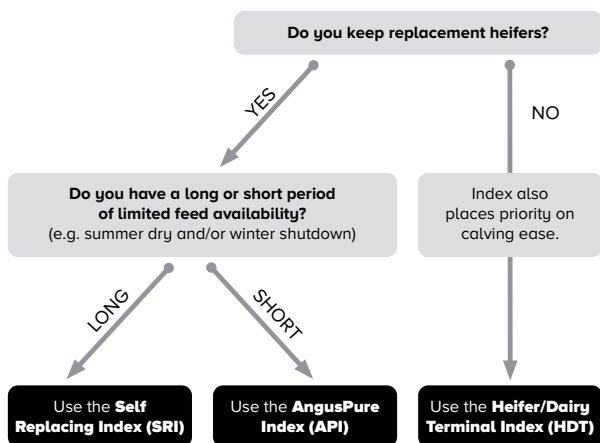
ANGUS NZ EBV's Explained

TransTasman Angus Cattle Evaluation (TACE) EBVs and selection indexes remove the effects of non-genetic factors (e.g. feeding regimes, animal age) from what is seen and measured to provide the best measure of an animal's genetic merit. BREEDPLAN information should always be used in conjunction with other selection criteria, including visual assessment.

A BEST PRACTICE GUIDE TO SELECTING YOUR NEXT NEW ZEALAND ANGUS SIRE

A **TACE Guide to Animal Selection** allows you to select the best genetics for your herd in four easy steps:

Which New Zealand Angus Selection Index should you use?



1. Consider the individual EBVs of importance.
2. Consider other traits of importance (e.g. visual assessment).
3. Identify the **Angus New Zealand selection** index of most relevance to you.
4. **Rank animals** using the chosen selection index.

The majority of these steps can be undertaken online, allowing you to generate a shortlist of bulls for potential purchase ahead of sale day. The searchable version of this catalogue can be found online here www.angusnz.com.

TRANTASMAN ANGUS CATTLE EVALUATION

A TACE Guide to Interpreting EBVs outlines how to assess and compare the genetic merit of animals. Please note that only EBVs from the same TACE analysis can be directly compared. The New Zealand Angus Association publishes the following TACE EBVs:

Calving Ease Direct (%): Higher (or more positive) CEDir EBVs indicate that two year old heifers will have less difficulty when calving this sire's progeny.

Calving Ease Daughters (%): Higher (or more positive) CEDtr EBVs indicate easier calving of this sire's daughters at two years of age.

Gestation Length (days): Bulls with lower (or more negative) GL EBVs are expected to produce progeny with shorter gestation lengths. Such progeny are also expected to be easier calving.

Birth Weight (kg): Bulls with lower, less positive BWt EBVs are expected to produce progeny that are lighter at birth, with an associated lower risk of calving difficulty. This EBV is particularly important when selecting sires where there is an increased risk of calving difficulty (e.g. heifers, cross-breeding).

200, 400 & 600 Day Weight EBVs (kg): Bulls with larger (or more positive) Weight EBVs are expected to produce progeny that grow faster to 200, 400 & 600 days of age, respectively. The Weight EBV of particular importance will depend on the target market e.g. vealer (200 D), yearling (400 D) or heavy steer (600 D).

Mature Cow Weight (kg): Bulls with larger (or more positive) MCW EBVs are expected to produce daughters with higher mature cow weights and increased feed requirements. More moderate MCW EBVs are generally more favourable in self replacing or maternal production systems.

Milk (kg): Bulls with higher (or more positive) Milk EBVs are expected to produce daughters with more maternal ability leading to higher 200 day weights in their progeny. Selection for moderate Milk EBVs may be preferable in harsher environments as cows with higher Milk EBVs can have impaired fertility and decreased survival under such conditions.

Scrotal Size (cm): Bulls with larger (or more positive) SS EBVs indicate better semen quality and quantity. Daughters are expected to be more fertile and reach puberty at an earlier age.

Days to Calving (days): Bulls with lower (or more negative) DTC EBVs are expected to produce daughters

that are more fertile and have a shorter interval from bull-in date to calving.

Carcase Weight (kg): Bulls with larger (or more positive) CWt EBVs are expected to produce progeny with heavier carcase weights.

Eye Muscle Area (sq. cm): Bulls with a higher (or more positive) EMA EBV are expected to produce progeny with better muscling.

Rib and Rump Fat EBVs (mm): Bulls with higher (or more positive) Rib & Rump Fat EBVs are expected to produce fatter progeny, relative to carcase weight. The desire for more or less fat will depend on the finishing ability of your animals.

Retail Beef Yield (%): Bulls with higher (or more positive) RBY EBVs are expected to produce progeny with higher yielding carcasses.

Intramuscular Fat (%): Bulls with higher (or more positive) IMF EBVs are expected to produce progeny with more marbling and better grading scores (e.g. MSA).

Docity (%): Bulls with higher (or more positive) DOC EBVs are expected to produce more progeny with acceptable temperament.



For more information on **using and understanding TACE EBVs & information**, including the BREEDPLAN Guides, scan the QR code.

<https://breedplan.une.edu.au/media/dtqpdm34/using-and-understanding-breedplan-ebvs.pdf>

SELECTION INDEXES



The New Zealand Angus Association currently reports three different selection indexes. These are the:

- Self Replacing Index
- AngusPure Index
- Heifer/Dairy Terminal Index

Each selection index is reported in units of net profitability per cow mated (\$), and relates to a commercial herd using Angus bulls. Each selection index is focused on efficient beef production, including maternal traits where appropriate. Scan the QR Code for more detail.

<https://breedplan.une.edu.au/media/bqjbnnbh/using-new-zealand-angus-selection-indexes.pdf>

ANGUS NZ BREED AVG. EBVS FOR 2022 BORN CALVES

DIR	DTRS	GL	BW	200D	400D	600D	MCW	MILK
+1.6	+0.9	-4.0	+4.3	+42	+78	+100	+91	+14

SS	DTC	CWT	EMA	RIB	RUMP	RBY	IMF
+2.0	-4.2	+48	+3.2	+1.1	+1.1	+0.4	+0.9

INDEX (\$)

SR	+\$113	AP	+\$111	HDT	+\$105
----	--------	----	--------	-----	--------



REFERENCE SIREs

SUDELEY COMPLETE S29^{SV}

Born: 24/08/21

ID: 20082021S29



MATAURI COMPLETE F010 (ET)

SIRE: TURIROA COMPLETE 16M013^{SV}
TURIROA 131003

PETERS ANGUS 08 166

DAM: SUDELEY 147
SUDELEY 716

September 2024 TransTasman Angus Cattle Evaluation

DIR	DTRS	GL	BW	200W	400W	600W
+6.1	+1.2	-4.3	+3.5	+25	+53	+82
64%	52%	83%	88%	87%	84%	84%
MWT	MILK	SS	DC	CWT	EMA	RIB
+83	+24	+2.8	-3.0	+29	+4.2	+0.6
81%	74%	79%	40%	73%	69%	70%
RUMP	RBY	IMF				
+2.4	+0.8	+1.8				
70%	62%	73%				

REFERENCE SIRES

SUDELEY S9 ^{SV}

Born: 20/08/21

ID: 20082021S9



MATAURI COMPLETE F010 (ET)

SIRE: TURIROA COMPLETE 16M013 ^{SV}
TURIROA 131003

ATAHUA BRAVADO 605-10

DAM: SUDELEY GEORGIE 14003
SUDELEY GEORGIE 253

September 2024 TransTasman Angus Cattle Evaluation

DIR	DTRS	GL	BW	200W	400W	600W
+10.3	+4.0	-6.0	-0.2	+22	+55	+74
65%	54%	84%	89%	89%	85%	85%
MWT	MILK	SS	DC	CWT	EMA	RIB
+43	+29	+2.3	-4.9	+40	+7.3	+2.9
82%	75%	80%	42%	75%	70%	71%
RUMP	RBV	IMF				
+5.0	+0.8	-0.1				
71%	63%	74%				

SUDELEY OKUTI R46 ^{SV}

Born: 29/08/20

ID: 20082020R46



CONNEALY CAPITALIST 028 (IMP USA)

SIRE: LD CAPITALIST 316 (IMP USA)
LD DIXIE ERICA 2053

SUDELEY 2 69

DAM: SUDELEY 14109
SUDELEY 175

September 2024 TransTasman Angus Cattle Evaluation

DIR	DTRS	GL	BW	200W	400W	600W
+4.6	+4.6	-1.9	+4.0	+42	+75	+92
72%	62%	82%	88%	86%	83%	83%
MWT	MILK	SS	DC	CWT	EMA	RIB
+90	+12	+0.4	-3.6	+55	-0.1	+0.0
81%	76%	79%	51%	74%	70%	71%
RUMP	RBV	IMF				
+1.3	-0.1	+2.5				
72%	65%	74%				

REFERENCE SIRES

KINCARDINE RAINSTORME R25 ^{PV}

Born: 04/09/20

ID: 13459020R25



BASIN RAINMAKER 2704

SIRE: BASIN RAINMAKER 4404 ^{PV}
BASIN JOY 1036

MATAURI RESOLUTION F030

DAM: KINCARDINE 17-759
KINCARDINE 1635

September 2024 TransTasman Angus Cattle Evaluation

DIR	DTRS	GL	BW	200W	400W	600W
+10.2	+6.8	-7.4	+2.3	+45	+80	+88
75%	57%	94%	96%	94%	89%	89%
MWT	MILK	SS	DC	CWT	EMA	RIB
+27	+32	+4.7	-4.0	+47	+9.1	+1.5
84%	77%	83%	44%	78%	73%	75%
RUMP	RBV	IMF				
+1.7	+0.7	+0.2				
75%	67%	77%				

RED OAK 19802 ^{SV}

Born: 16/08/19

ID: 21117019802



RED OAK 14175 (ET)

SIRE: RED OAK 16644 ^{SV}
RED OAK 14143

TANGIHAU 0935

DAM: RED OAK 12661 ^{SV}
RED OAK 752

September 2024 TransTasman Angus Cattle Evaluation

DIR	DTRS	GL	BW	200W	400W	600W
-3.0	-12.6	+0.4	+4.2	+37	+71	+102
70%	54%	80%	92%	90%	88%	87%
MWT	MILK	SS	DC	CWT	EMA	RIB
+83	+11	+2.1	-2.9	+43	+1.2	+2.7
83%	74%	86%	44%	77%	73%	75%
RUMP	RBV	IMF				
+3.9	-0.3	+2.5				
75%	69%	76%				

REFERENCE SIRES

WOODBANK 9161 ^{SV}

Born: 03/09/19

ID: 150090199161



H P C A INTENSITY (IMP USA)

SIRE: WOODBANK INTENSITY 5131 ^{SV}
WOODBANK 1106

MERCHISTON INFINITY 774

DAM: WOODBANK 4068
WOODBANK 9079

September 2024 TransTasman Angus Cattle Evaluation

DIR	DTRS	GL	BW	200W	400W	600W
-3.4	+0.1	-4.0	+5.1	+42	+77	+101
69%	56%	81%	92%	90%	87%	85%
MWT	MILK	SS	DC	CWT	EMA	RIB
+85	+17	+2.0	-2.7	+55	+1.4	-1.5
82%	74%	82%	44%	75%	70%	72%
RUMP	RBY	IMF				
-2.4	+1.0	+0.6				
72%	64%	74%				

SEPTEMBER 2024 TRANSTASMAN ANGUS CATTLE EVALUATION PERCENTILE BAND FOR ALL 2022 BORN CALVES																				
Calv-Ease				Birth			Growth				Fertility				Carcase				Index	
Dir	Dtrs	GL	Bwt	200	400	600	Mwt	Milk	SS	DC	Cwt	EMA	Rib	P8	RBY	IMF	SRI	API	HDT	
%				days		kg		cm		days		kg		sq.cm		mm		%		\$
Top 1%	+10.1	+8.5	-9.3	+0.0	+63	+111	+147	+150	+27	+4.4	-7.8	+85	+10.9	+5.1	+6.5	+1.9	+4.0	+185	+205	+144
Top 5%	+8.2	+6.8	-7.5	+1.3	+56	+100	+131	+130	+23	+3.6	-6.7	+74	+8.3	+3.8	+4.7	+1.4	+3.0	+163	+177	+135
Top 10%	+7.1	+5.8	-6.6	+2.0	+53	+95	+124	+121	+21	+3.2	-6.0	+68	+7.0	+3.1	+3.8	+1.1	+2.5	+151	+162	+129
Top 20%	+5.5	+4.3	-5.7	+2.8	+49	+88	+116	+110	+18	+2.7	-5.3	+61	+5.5	+2.4	+2.8	+0.9	+1.9	+137	+144	+122
Top 30%	+4.2	+3.1	-5.0	+3.4	+46	+84	+110	+103	+17	+2.5	-4.9	+56	+4.6	+1.9	+2.1	+0.7	+1.5	+127	+132	+117
Top 40%	+3.1	+2.1	-4.4	+3.9	+43	+80	+105	+96	+16	+2.2	-4.5	+52	+3.8	+1.5	+1.6	+0.5	+1.2	+119	+121	+112
Top 50%	+2.0	+1.1	-3.9	+4.3	+41	+77	+100	+91	+14	+2.0	-4.2	+48	+3.0	+1.1	+1.1	+0.4	+0.9	+112	+112	+107
Top 60%	+0.8	+0.1	-3.4	+4.7	+39	+74	+96	+85	+13	+1.8	-3.8	+44	+2.3	+0.7	+0.6	+0.3	+0.6	+105	+102	+101
Top 70%	-0.4	-1.0	-2.9	+5.2	+37	+71	+91	+79	+12	+1.5	-3.5	+40	+1.6	+0.3	+0.1	+0.1	+0.3	+97	+91	+95
Top 80%	-2.0	-2.3	-2.2	+5.7	+35	+67	+85	+71	+10	+1.3	-3.0	+36	+0.7	-0.2	-0.6	-0.1	-0.1	+89	+79	+88
Top 90%	-4.5	-4.2	-1.3	+6.5	+31	+61	+77	+60	+8	+0.8	-2.4	+30	-0.5	-1.0	-1.7	-0.3	-0.6	+76	+61	+78
Top 95%	-6.7	-6.0	-0.5	+7.1	+28	+56	+70	+51	+6	+0.4	-1.9	+24	-1.5	-1.7	-2.5	-0.6	-1.0	+64	+45	+67
Top 99%	-12.2	-10.2	+1.3	+8.4	+22	+46	+56	+32	+3	-0.3	-0.7	+11	-3.6	-3.1	-4.3	-1.1	-1.9	+42	+16	+45

Based on the results of the
August 2024 TACE analysis

▲ Negative (lower) values more favourable

▲ Negative (lower) values more favourable

YEARLING HEIFERS

Lot: 1

BREEDING HEIFERS

NOTES: Pen of 12 breeding heifers

Purchaser:

Price \$

Lot: 2

BREEDING HEIFERS

NOTES: Pen of 12 breeding heifers

Purchaser:

Price \$

YEARLING BULLS

Lot: 3

SUDELEY U145 ^{SV}

Born: 13/09/23

ID: 20082023U145

RED OAK 16644 ^{SV}

SIRE: RED OAK 19802 ^{SV}

RED OAK 12661 ^{SV}

TE MANIA 07 623

DAM: SUDELEY 040

SUDELEY 0551

September 2024 Trans Tasman Angus Cattle Evaluation

DIR	DTRS	GL	BW	200W	400W	600W
+2.2	-9.9	-4.0	+2.8	+33	+73	+99
64%	53%	81%	82%	83%	81%	81%
MWT	MILK	SS	DC	CWT	EMA	RIB
+99	+14	+2.7	-4.0	+48	+3.7	+1.5
78%	73%	79%	41%	70%	69%	70%
RUMP	RBV	IMF				
+1.4	+0.7	+0.8				
70%	62%	74%				

NOTES:

ANGUSGS
Powered by Neogen GeneSeek

Purchaser:

Price \$

Lot: 4

SUDELEY U277 ^{PV}

Born: 27/08/23

ID: 20082023U277

TURIROA COMPLETE 16M013 ^{SV}

SIRE: SUDELEY S9 ^{SV}
SUDELEY GEORGIE 14003

SUDELEY CHAINSMOKER Q255 ^{SV}

DAM: SUDELEY S252 ^{PV}
SUDELEY Q26 ^{SV}

September 2024 TransTasman Angus Cattle Evaluation						
DIR	DTRS	GL	BW	200W	400W	600W
+7.3	+1.1	-0.1	+1.4	+24	+57	+69
62%	51%	81%	81%	82%	79%	80%
MWT	MILK	SS	DC	CWT	EMA	RIB
+46	+24	+2.7	-6.3	+28	+3.2	+3.3
77%	72%	77%	38%	67%	67%	67%
RUMP	RBV	IMF				
+5.0	+0.5	+0.5				
68%	58%	72%				

NOTES:



Purchaser:

Price \$

Lot: 5

SUDELEY U57 ^{SV}

Born: 25/08/23

ID: 20082023U57

MATAURI REALITY 839

SIRE: SUDELEY BARBARIAN 18224 ^{SV}
SUDELEY 01

KAHARAU CLARION 844 ^{SV}

DAM: SUDELEY 141
SUDELEY 834

September 2024 TransTasman Angus Cattle Evaluation						
DIR	DTRS	GL	BW	200W	400W	600W
+7.1	+6.8	-5.0	+2.0	+23	+43	+51
66%	57%	81%	83%	83%	81%	81%
MWT	MILK	SS	DC	CWT	EMA	RIB
+61	+6	+2.3	-5.3	+9	+6.2	+0.3
78%	75%	79%	46%	71%	70%	70%
RUMP	RBV	IMF				
+0.7	+0.9	+3.0				
71%	62%	74%				

NOTES:



Purchaser:

Price \$

Lot: 6

SUDELEY U152^{SV}

Born: 13/09/23

ID: 20082023U152

LD CAPITALIST 316 (IMP USA)

SIRE: SUDELEY OKUTI R46^{SV}
SUDELEY 14109

SUDELEY CLAYMOOR 227

DAM: SUDELEY 6006
SUDELEY 040

September 2024 TransTasman Angus Cattle Evaluation						
DIR	DTRS	GL	BW	200W	400W	600W
+2.8	+0.4	-2.6	+3.4	+36	+59	+78
65%	54%	81%	82%	82%	80%	81%
MWT	MILK	SS	DC	CWT	EMA	RIB
+80	+18	+0.4	-0.9	+34	-5.0	-0.6
78%	73%	78%	41%	69%	68%	68%
RUMP	RBV	IMF				
-0.4	+0.0	+1.4				
69%	60%	73%				

NOTES:



Purchaser:

Price \$

Lot: 7

SUDELEY U174^{SV}

Born: 17/09/23

ID: 20082023U174

WOODBANK INTENSITY 5131^{SV}

SIRE: WOODBANK 9161^{SV}
WOODBANK 4068

TURIHAUA REX E297^{SV}

DAM: SUDELEY 14008
SUDELEY 713

September 2024 TransTasman Angus Cattle Evaluation						
DIR	DTRS	GL	BW	200W	400W	600W
+3.4	-1.3	-6.7	+4.4	+38	+68	+102
62%	51%	80%	81%	82%	79%	79%
MWT	MILK	SS	DC	CWT	EMA	RIB
+97	+13	+1.3	-2.2	+47	-0.5	-1.4
76%	71%	77%	39%	69%	67%	67%
RUMP	RBV	IMF				
-3.1	+1.1	+0.1				
68%	59%	72%				

NOTES:



Purchaser:

Price \$

Lot: 8

SUDELEY U19^{PV}

Born: 21/08/23

ID: 20082023U19

BASIN RAINMAKER 4404^{PV}

SIRE: KINCARDINE RAINSTORME R25^{PV}
KINCARDINE 17-759

STORTH OAKS EVEREST J20

DAM: SUDELEY Q30^{SV}
SUDELEY 942

September 2024 TransTasman Angus Cattle Evaluation						
DIR	DTRS	GL	BW	200W	400W	600W
+9.1	+9.6	-6.4	+0.0	+33	+64	+78
65%	54%	82%	82%	83%	80%	81%
MWT	MILK	SS	DC	CWT	EMA	RIB
+34	+29	+2.3	-5.0	+48	-0.5	+5.4
78%	73%	78%	41%	69%	68%	68%
RUMP	RBV	IMF				
+8.0	-0.6	+0.6				
69%	60%	73%				

NOTES:



Purchaser:

Price \$

Lot: 9

SUDELEY U85^{PV}

Born: 28/08/23

ID: 20082023U85

BUBS SOUTHERN CHARM AA31 (IMP USA)

SIRE: STOKMAN SOUTHERN CHARM P228^{SV}
STOKMAN DONNA G2 (ET)

CRICKLEWOOD L47

DAM: SUDELEY Q142^{SV}
SUDELEY 14025

September 2024 TransTasman Angus Cattle Evaluation						
DIR	DTRS	GL	BW	200W	400W	600W
-3.5	-3.2	-2.3	+2.3	+32	+67	+86
64%	53%	81%	81%	82%	80%	80%
MWT	MILK	SS	DC	CWT	EMA	RIB
+67	+12	+2.6	-2.8	+43	-0.1	+3.3
77%	73%	78%	42%	68%	68%	68%
RUMP	RBV	IMF				
+5.7	-0.8	+1.3				
69%	60%	72%				

NOTES:



Purchaser:

Price \$

Lot: 10

SUDELEY U105 ^{PV}

Born: 04/09/23

ID: 20082023U105

BASIN RAINMAKER 4404 ^{PV}

SIRE: KINCARDINE RAINSTORME R25 ^{PV}

KINCARDINE 17-759

SUDELEY HUMPTY DUMPTY 14057

DAM: SUDELEY 17085 ^{SV}

SUDELEY 708

September 2024 TransTasman Angus Cattle Evaluation						
DIR	DTRS	GL	BW	200W	400W	600W
+5.7	+3.5	-2.8	+4.2	+31	+56	+62
64%	52%	82%	82%	83%	80%	80%
MWT	MILK	SS	DC	CWT	EMA	RIB
+19	+9	+3.3	-5.4	+19	+3.4	+1.7
77%	72%	77%	38%	69%	67%	68%
RUMP	RBV	IMF				
+1.8	+0.5	+1.4				
69%	59%	72%				

NOTES:



Purchaser:

Price \$

Lot: 11

SUDELEY U70 ^{SV}

Born: 26/08/23

ID: 20082023U70

BASIN RAINMAKER 4404 ^{PV}

SIRE: KINCARDINE RAINSTORME R25 ^{PV}

KINCARDINE 17-759

FLORIDALE YEOMAN

DAM: SUDELEY 139

SUDELEY 0514

September 2024 TransTasman Angus Cattle Evaluation						
DIR	DTRS	GL	BW	200W	400W	600W
+5.1	-3.8	-4.9	+4.0	+43	+78	+94
64%	52%	82%	82%	83%	80%	81%
MWT	MILK	SS	DC	CWT	EMA	RIB
+69	+21	+2.9	-3.4	+46	+4.6	-1.3
77%	73%	78%	39%	69%	68%	68%
RUMP	RBV	IMF				
-1.6	+0.6	+1.6				
69%	60%	73%				

NOTES:



Purchaser:

Price \$

Lot: 12

SUDELEY U53^{SV}

Born: 24/08/23

ID: 20082023U53

BASIN RAINMAKER 4404^{PV}

SIRE: KINCARDINE RAINSTORME R25^{PV}

KINCARDINE 17-759

SUDELEY 058

DAM: SUDELEY GEORGIE 14064

SUDELEY GEORGIE 975

September 2024 TransTasman Angus Cattle Evaluation						
DIR	DTRS	GL	BW	200W	400W	600W
+8.1	+3.5	-5.5	+4.7	+45	+78	+99
64%	51%	82%	82%	83%	80%	81%
MWT	MILK	SS	DC	CWT	EMA	RIB
+79	+21	+3.4	-4.3	+54	+4.0	+1.1
77%	73%	78%	39%	69%	68%	68%
RUMP	RBV	IMF				
+1.5	+0.4	-0.7				
69%	60%	72%				

NOTES:



Purchaser:

Price \$

Lot: 13

SUDELEY U135^{PV}

Born: 11/09/23

ID: 20082023U135

SUDELEY VIKING 18101^{SV}

SIRE: SUDELEY MACDOUGAL S50^{SV}

SUDELEY 15191

LD CAPITALIST 316 (IMP USA)

DAM: SUDELEY R29^{PV}

SUDELEY 6040

September 2024 TransTasman Angus Cattle Evaluation						
DIR	DTRS	GL	BW	200W	400W	600W
+9.4	+2.1	-3.5	+0.8	+29	+53	+69
63%	54%	81%	80%	82%	79%	80%
MWT	MILK	SS	DC	CWT	EMA	RIB
+51	+20	+2.4	-4.6	+31	+5.7	+3.8
77%	72%	77%	41%	67%	67%	67%
RUMP	RBV	IMF				
+4.3	-0.3	+1.3				
68%	59%	72%				

NOTES:



Purchaser:

Price \$

Lot: 14

SUDELEY U241^{PV}

Born: 15/10/23

ID: 20082023U241

TURIROA COMPLETE 16M013^{SV}

SIRE: SUDELEY COMPLETE S29^{SV}

SUDELEY 147

GOLDWYN H817^{SV}

DAM: SUDELEY 18029^{SV}

SUDELEY 9112

September 2024 TransTasman Angus Cattle Evaluation						
DIR	DTRS	GL	BW	200W	400W	600W
+3.7	+5.3	-7.1	+3.8	+31	+56	+77
62%	52%	81%	81%	82%	80%	80%
MWT	MILK	SS	DC	CWT	EMA	RIB
+75	+22	+0.7	-0.9	+44	+0.8	+1.9
77%	72%	77%	40%	68%	67%	67%
RUMP	RBV	IMF				
+2.2	+0.5	-0.2				
68%	59%	72%				

NOTES:



Purchaser:

Price \$

Lot: 15

SUDELEY U186^{PV}

Born: 21/09/23

ID: 20082023U186

TURIROA COMPLETE 16M013^{SV}

SIRE: SUDELEY COMPLETE S29^{SV}

SUDELEY 147

SUDELEY TITANIC 13001

DAM: SUDELEY 17053^{SV}

SUDELEY 150

September 2024 TransTasman Angus Cattle Evaluation						
DIR	DTRS	GL	BW	200W	400W	600W
+4.4	-3.0	-2.8	+2.8	+27	+56	+77
61%	50%	80%	81%	82%	79%	79%
MWT	MILK	SS	DC	CWT	EMA	RIB
+81	+21	+2.2	-1.5	+19	+1.2	+0.3
76%	71%	77%	37%	67%	66%	67%
RUMP	RBV	IMF				
+1.4	+0.3	+1.8				
68%	58%	71%				

NOTES:



Purchaser:

Price \$

Lot: 16

SUDELEY U179^{PV}

Born: 18/09/23

ID: 20082023U179

TURIROA COMPLETE 16M013^{SV}

SIRE: SUDELEY COMPLETE S29^{SV}
SUDELEY 147

SUDELEY 15029

DAM: SUDELEY 17156
SUDELEY 13089

September 2024 TransTasman Angus Cattle Evaluation						
DIR	DTRS	GL	BW	200W	400W	600W
+4.0	+2.5	-2.2	+3.1	+28	+52	+78
62%	51%	81%	81%	82%	80%	80%
MWT	MILK	SS	DC	CWT	EMA	RIB
+88	+20	+2.3	-4.2	+20	+5.2	+1.5
77%	71%	77%	38%	68%	67%	67%
RUMP	RBV	IMF				
+4.4	+0.4	+1.3				
68%	59%	72%				

NOTES:



Purchaser:

Price \$

Lot: 17

SUDELEY U271^{PV}

Born: 28/08/23

ID: 20082023U271

TURIROA COMPLETE 16M013^{SV}

SIRE: SUDELEY S9^{SV}
SUDELEY GEORGIE 14003

SUDELEY VIKING 18101^{SV}

DAM: SUDELEY S55^{PV}
SUDELEY 18088^{SV}

September 2024 TransTasman Angus Cattle Evaluation						
DIR	DTRS	GL	BW	200W	400W	600W
+8.5	+3.5	-3.3	+1.9	+27	+56	+67
61%	51%	81%	81%	82%	79%	80%
MWT	MILK	SS	DC	CWT	EMA	RIB
+78	+15	+2.5	-3.4	+24	+1.3	+1.7
77%	72%	77%	38%	67%	67%	67%
RUMP	RBV	IMF				
+1.0	+0.6	+1.3				
68%	58%	72%				

NOTES:



Purchaser:

Price \$

Lot: 18

SUDELEY U257^{PV}

Born: 18/09/23

ID: 20082023U257

TURIROA COMPLETE 16M013^{SV}

SIRE: SUDELEY S9^{SV}

SUDELEY GEORGIE 14003

SUDELEY CHAINSMOKER Q255^{SV}

DAM: SUDELEY S229^{PV}

SUDELEY Q253^{SV}

September 2024 TransTasman Angus Cattle Evaluation						
DIR	DTRS	GL	BW	200W	400W	600W
+10.8	+7.5	-4.5	-0.6	+18	+48	+63
62%	51%	81%	81%	82%	80%	80%
MWT	MILK	SS	DC	CWT	EMA	RIB
+19	+27	+3.0	-4.2	+24	+5.0	+2.6
77%	72%	77%	38%	68%	67%	67%
RUMP	RBV	IMF				
+3.4	+0.3	+3.7				
68%	59%	72%				

NOTES:



Purchaser:

Price \$

Lot: 19

SUDELEY U177^{SV}

Born: 18/09/23

ID: 20082023U177

RED OAK 16644^{SV}

SIRE: RED OAK 19802^{SV}

RED OAK 12661^{SV}

FLORIDALE YEOMAN

DAM: SUDELEY 093

265 OF TURIORA

September 2024 TransTasman Angus Cattle Evaluation						
DIR	DTRS	GL	BW	200W	400W	600W
+0.3	-5.9	-1.0	+4.6	+37	+74	+119
64%	53%	80%	82%	83%	80%	81%
MWT	MILK	SS	DC	CWT	EMA	RIB
+102	+16	+2.1	-0.5	+50	+0.2	+0.6
77%	72%	78%	41%	69%	68%	69%
RUMP	RBV	IMF				
+0.3	-0.1	+2.4				
69%	61%	73%				

NOTES:



Purchaser:

Price \$

Lot: 20

SUDELEY U237 ^{PV}

Born: 11/10/23

ID: 20082023U237

SUDELEY VIKING 18101 ^{SV}

SIRE: SUDELEY BJORN S80 ^{SV}

SUDELEY 1141

GOLDWYN H817 ^{SV}

DAM: SUDELEY 17055 ^{SV}

SUDELEY 158

September 2024 TransTasman Angus Cattle Evaluation						
DIR	DTRS	GL	BW	200W	400W	600W
+5.7	+4.9	-2.9	+1.9	+28	+58	+74
62%	52%	81%	81%	82%	79%	80%
MWT	MILK	SS	DC	CWT	EMA	RIB
+63	+14	+1.6	-3.5	+34	+1.5	+2.6
76%	72%	77%	40%	67%	67%	67%
RUMP	RBV	IMF				
+3.8	+0.0	+2.0				
68%	59%	72%				

NOTES:



Purchaser:

Price \$

Lot: 21

SUDELEY U187 ^{PV}

Born: 21/09/23

ID: 20082023U187

LD CAPITALIST 316 (IMP USA)

SIRE: SUDELEY OKUTI R46 ^{SV}

SUDELEY 14109

SUDELEY HUMPTY DUMPTY 14057

DAM: SUDELEY 18222 ^{SV}

SUDELEY 842

September 2024 TransTasman Angus Cattle Evaluation						
DIR	DTRS	GL	BW	200W	400W	600W
+7.1	-0.7	-6.9	+2.2	+35	+67	+92
65%	55%	81%	81%	82%	80%	80%
MWT	MILK	SS	DC	CWT	EMA	RIB
+84	+8	+1.2	-5.2	+45	+1.4	+1.7
78%	74%	78%	41%	69%	68%	68%
RUMP	RBV	IMF				
+2.2	-0.6	+4.2				
69%	60%	73%				

NOTES:



Purchaser:

Price \$

Lot: 22

SUDELEY U117 ^{PV}

Born: 08/09/23

ID: 20082023U117

TE MANIA INFINITY 04 379

SIRE: SUDELEY 813 ^{SV}

SUDELEY 054

WHENUAPAPA MO K319 ^{SV}

DAM: SUDELEY Q90 ^{SV}

SUDELEY 14008

September 2024 TransTasman Angus Cattle Evaluation						
DIR	DTRS	GL	BW	200W	400W	600W
+7.8	-0.6	-7.5	+2.4	+38	+80	+100
65%	56%	81%	81%	82%	80%	80%
MWT	MILK	SS	DC	CWT	EMA	RIB
+95	+11	+1.8	-2.4	+46	-3.6	+3.9
78%	75%	78%	45%	70%	70%	70%
RUMP	RBV	IMF				
+3.6	-0.7	+1.0				
71%	62%	74%				

NOTES:



Purchaser:

Price \$

Lot: 23

SUDELEY U207 ^{PV}

Born: 30/09/23

ID: 20082023U207

WOODBANK INTENSITY 5131 ^{SV}

SIRE: WOODBANK 9161 ^{SV}

WOODBANK 4068

SUDELEY 15082

DAM: SUDELEY 17101 ^{SV}

SUDELEY 15001

September 2024 TransTasman Angus Cattle Evaluation						
DIR	DTRS	GL	BW	200W	400W	600W
+2.0	-1.5	-5.4	+3.9	+43	+80	+100
62%	50%	80%	81%	82%	79%	79%
MWT	MILK	SS	DC	CWT	EMA	RIB
+71	+18	+2.6	-2.6	+55	+2.7	-1.0
76%	71%	77%	37%	68%	66%	67%
RUMP	RBV	IMF				
-1.6	+0.7	+0.7				
68%	58%	72%				

NOTES:



Purchaser:

Price \$

Lot: 24

SUDELEY U233^{PV}

Born: 09/10/23

ID: 20082023U233

SUDELEY VIKING 18101^{SV}

SIRE: SUDELEY BJORN S80^{SV}
SUDELEY 1141

SUDELEY HUMPTY DUMPTY 14057

DAM: SUDELEY 18238^{SV}
SUDELEY 306

September 2024 TransTasman Angus Cattle Evaluation						
DIR	DTRS	GL	BW	200W	400W	600W
+1.9	-6.7	-2.8	+4.8	+34	+68	+92
62%	52%	80%	80%	81%	79%	79%
MWT	MILK	SS	DC	CWT	EMA	RIB
+98	+8	+3.3	-5.2	+34	+1.2	+2.1
76%	72%	77%	39%	67%	67%	67%
RUMP	RBV	IMF				
+2.0	-0.3	+3.2				
68%	58%	72%				

NOTES:


Powered by Neogen GeneSeek

Purchaser:

Price \$

Lot: 25

SUDELEY U206^{PV}

Born: 28/09/23

ID: 20082023U206

SUDELEY VIKING 18101^{SV}

SIRE: SUDELEY IRONSIDE S11^{SV}
SUDELEY 13088

SUDELEY BARBARIAN 18224^{SV}

DAM: SUDELEY R289^{PV}
SUDELEY 18232^{SV}

September 2024 TransTasman Angus Cattle Evaluation						
DIR	DTRS	GL	BW	200W	400W	600W
+4.7	+3.1	-5.3	+5.4	+43	+75	+91
63%	52%	81%	81%	82%	79%	80%
MWT	MILK	SS	DC	CWT	EMA	RIB
+101	+8	+1.2	-5.2	+47	+3.9	+1.2
76%	72%	77%	39%	68%	67%	67%
RUMP	RBV	IMF				
+0.9	+0.7	+1.1				
68%	58%	72%				

NOTES:


Powered by Neogen GeneSeek

Purchaser:

Price \$

Lot: 26

SUDELEY U209 ^{PV}

Born: 29/09/23

ID: 20082023U209

TURIROA COMPLETE 16M013 ^{SV}

SIRE: SUDELEY COMPLETE S29 ^{SV}

SUDELEY 147

SUDELEY PRADO 13057

DAM: SUDELEY 18026 ^{SV}

SUDELEY 14089

September 2024 TransTasman Angus Cattle Evaluation						
DIR	DTRS	GL	BW	200W	400W	600W
+5.4	-1.5	-6.6	+2.1	+18	+43	+70
61%	50%	80%	81%	81%	79%	79%
MWT	MILK	SS	DC	CWT	EMA	RIB
+65	+18	+1.3	-2.6	+29	+5.9	+0.2
76%	72%	77%	37%	67%	66%	66%
RUMP	RBV	IMF				
+3.1	+1.3	+1.2				
67%	58%	71%				

NOTES:



Purchaser:

Price \$

Lot: 27

SUDELEY U184 ^{SV}

Born: 21/09/23

ID: 20082023U184

LD CAPITALIST 316 (IMP USA)

SIRE: SUDELEY OKUTI R46 ^{SV}

SUDELEY 14109

TE MANIA 07 623

DAM: SUDELEY 2153

WILLOW LEA UNION G31

September 2024 TransTasman Angus Cattle Evaluation						
DIR	DTRS	GL	BW	200W	400W	600W
+3.9	+1.1	-1.7	+2.5	+43	+85	+106
64%	54%	81%	81%	82%	80%	80%
MWT	MILK	SS	DC	CWT	EMA	RIB
+100	+13	+0.3	-3.7	+65	+3.5	+0.5
77%	73%	78%	41%	68%	67%	68%
RUMP	RBV	IMF				
+1.7	+0.0	+2.5				
69%	59%	72%				

NOTES:



Purchaser:

Price \$

Lot: 28

SUDELEY U220^{PV}

Born: 04/10/23

ID: 20082023U220

SUDELEY VIKING 18101^{SV}

SIRE: SUDELEY BJORN S80^{SV}

SUDELEY 1141

WHENUAPAPA MO K319^{SV}

DAM: SUDELEY Q87^{SV}

SUDELEY 14121

September 2024 TransTasman Angus Cattle Evaluation						
DIR	DTRS	GL	BW	200W	400W	600W
+5.0	+7.0	-6.0	+5.0	+30	+61	+80
63%	52%	81%	81%	82%	80%	80%
MWT	MILK	SS	DC	CWT	EMA	RIB
+80	+15	+1.7	-3.2	+27	-1.3	+4.2
77%	73%	78%	39%	68%	68%	68%
RUMP	RBV	IMF				
+3.6	-0.5	+1.9				
69%	59%	73%				

NOTES:



Purchaser:

Price \$

Lot: 29

SUDELEY U232^{SV}

Born: 09/10/23

ID: 20082023U232

RED OAK 16644^{SV}

SIRE: RED OAK 19802^{SV}

RED OAK 12661^{SV}

SUDELEY 058

DAM: SUDELEY 15010

SUDELEY 13196

September 2024 TransTasman Angus Cattle Evaluation						
DIR	DTRS	GL	BW	200W	400W	600W
+6.2	-7.9	-2.2	+3.0	+19	+41	+61
64%	52%	81%	82%	83%	81%	81%
MWT	MILK	SS	DC	CWT	EMA	RIB
+49	+11	-0.2	-3.7	+14	-3.9	+4.2
77%	72%	79%	40%	70%	68%	69%
RUMP	RBV	IMF				
+5.0	-0.9	+1.9				
70%	62%	73%				

NOTES:



Purchaser:

Price \$

Lot: 30

SUDELEY U222 ^{PV}

Born: 05/10/23

ID: 20082023U222

LD CAPITALIST 316 (IMP USA)

SIRE: SUDELEY OKUTI R46 ^{SV}
SUDELEY 14109

MATAURI MACK G176 ^{PV}

DAM: SUDELEY Q259 ^{SV}
SUDELEY 738

September 2024 TransTasman Angus Cattle Evaluation						
DIR	DTRS	GL	BW	200W	400W	600W
+7.0	+1.8	-0.5	+3.6	+41	+70	+90
64%	54%	81%	81%	82%	80%	80%
MWT	MILK	SS	DC	CWT	EMA	RIB
+87	+15	+3.4	-4.7	+53	-3.8	-1.7
77%	73%	77%	42%	68%	67%	67%
RUMP	RBV	IMF				
-2.7	+0.0	+2.0				
68%	59%	72%				

NOTES:



Purchaser:

Price \$

Lot: 31

SUDELEY U248 ^{SV}

Born: 06/10/23

ID: 20082023U248

WOODBANK INTENSITY 5131 ^{SV}

SIRE: WOODBANK 9161 ^{SV}
WOODBANK 4068

SUDELEY CLAYMOOR 227

DAM: SUDELEY 6150
SUDELEY 010

September 2024 TransTasman Angus Cattle Evaluation						
DIR	DTRS	GL	BW	200W	400W	600W
-0.2	-2.1	-3.1	+2.6	+27	+55	+76
63%	52%	81%	82%	82%	80%	80%
MWT	MILK	SS	DC	CWT	EMA	RIB
+78	+9	+1.1	-3.7	+31	+3.7	-0.1
77%	72%	78%	39%	68%	67%	67%
RUMP	RBV	IMF				
-2.0	+1.2	+1.3				
68%	59%	72%				

NOTES:



Purchaser:

Price \$

NOTES:



THE INDUSTRY STANDARD NOW HAS HIGHER STANDARDS.

**Angus GS is not resting on past accomplishments.
There's more work to be done.**

With the addition of 22,000 SNPs, Angus GS becomes the unmatched Angus specific genomic profiler. It provides greater power for traits including calving ease, birth weight, marbling, female fertility and more.

Logo displayed on all animal lots that have been SNP tested and included in a Genomic Evaluation, therefore shows Genomics under Traits Analysed. All AngusGS 75K tested animals have had parentage run by PBB DNA using the Helical system. This can include both sire and dam verification.

**Realise your operation's
full potential.**

ANGUS^{GS}
Powered by Neogen GeneSeek

TALK TO THE PBB DNA TEAM

M: 06 323 4484 **E:** dna@pbbnz.com
pbbnz.com

Scan the QR code to
find out more





FMG
Advice & Insurance

BULL-PROOF

YOUR ASSETS AGAINST RURAL THEFT.

Theft and burglaries occur more often than you might think, and the number of theft claims is increasing.

Over the last five years we have paid \$48 million in theft claims – including \$620k in fuel claims alone, that's doubled since 2019 and equates to over 300,000 litres!*

We have teamed up with NZ Police to create a Rural Crime Prevention Guide to help prevent theft and burglaries at your rural property – find out more at fmg.co.nz/rural-theft

We're here for the good of the country.

*FMG Data 2019 to 2023

FMG Premier Bull Sale Insurance

What is FMG Premier Bull Insurance?

FMG provides automatic insurance for all bulls auctioned at an FMG Premier Bull Sale up to the value of \$50,000 for 14 days at no cost to the purchaser. For any bull purchased over \$50,000 talk to an FMG representative.

What is the length of cover?

You will automatically be insured for the specified bull for 14 days. You also have the option to extend the length of insurance to 12 months. Simply tick the “Extend your Premier Bull Insurance” option on the Purchaser Slip. The specified bull is then insured for the remaining period of 12 months at **7.6%** of the purchase price (the sum insured for the bull). If you would like to discuss an alternative timeframe, please have a chat with your local FMG representative.

You don't have to pay today, FMG will invoice you for this additional cover.



What are the benefits?

✓ <i>Infertility</i>	Cover if your specified bull has to be euthanised due to permanent infertility caused by certain accidents, disease, or illness.
✓ <i>Theft or death</i>	We cover your specified bull for theft or death caused by certain accidents, disease, injury, or illness (including while in transit anywhere in New Zealand).
✓ <i>Vet costs</i>	We cover up to \$500 for treatment of your specified bull to prevent death.

What will FMG pay?

FMG will pay the fair market value of your specified bull, less any amount you receive for the sale of the carcass, up to the amount shown on the insurance certificate.



Bull Purchaser Instruction and FMG Insurance Slip



Please complete this slip and hand to the Booking Clerk before leaving the sale. This slip **MUST** be fully completed to be eligible for the 14 days free Premier Bull Insurance.

Purchaser/Agent full name:	If purchasing on behalf of, what is your relationship to owner?			Buyer No:
FMG Client Account Number:	Purchaser's full name:			Purchaser's DOB: / /
Purchaser's email:	Purchaser's phone:			Farm/business name:
Purchaser's postal address:	Post code:			NAIT No.:
Delivery address:	Stock firm to be charged:			
Lot:	Tag:	\$	Breed:	DOB:

03/24 INHD



Call us on
0800 366 466



Visit our website
fmg.co.nz

Transport instructions:

Stock firm to be charged:

Period of FMG Insurance

☐

Tick here to extend your Bull Insurance to 12 months @ 7.6% of the purchase price of your bull. *This will extend the cover beyond the initial 14 days free cover for the remaining period of 12 months.*

If you do not wish to be contacted by FMG in the future to discuss other products and services please tick here: ☐

I acknowledge and agree for my personal information contained in this Purchaser Instruction and Insurance Slip to be shared between the parties involved in this bull sale, including but not limited to the vendor or their representatives, livestock agencies, transport operators and FMG. The information is shared for the purpose of completing the sale and purchase of the bull, including insurance with FMG.

NO VERBAL INSTRUCTIONS
WILL BE ACCEPTED

Signature of Purchaser or Agent:

Date: / /

Disclaimer

Please note this is only a summary of the product and is subject to our specific product documentation. For full details, you should refer to the policy document. You can get these documents, and any other information you need, from your FMG representative, by calling us or visiting, fmg.co.nz/livestockpolicy





ANDREW & ANNA LAING

Springvale

4456 Christchurch Akaroa Road,
RD 1, Little River 7591

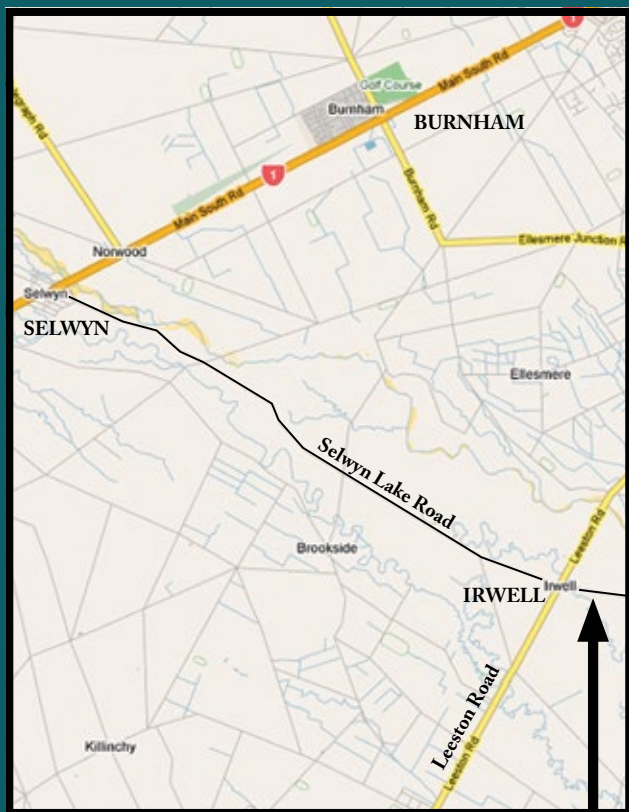
M: 027 253 5625

E: Sudeleygenetics@gmail.com

 **Sudely Angus Genetics**

sudeleygenetics.co.nz

HOW TO FIND US



SUDELEY GENETICS YEARLING BULL SALE

“Meadowbank” Sale Venue


546 Selwyn Lake Road, Irwell, Leeston
Sale on Thursday, 10th October 2024 at 1pm

ANDREW & ANNA LAING

Springvale

4456 Christchurch Akaroa Road,
RD 1, Little River 7591
M: 027 253 5625

E: Sudeleygenetics@gmail.com

 Sudely Angus Genetics
sudeleygenetics.co.nz